

LIVE THE PRIME LIFE

PRIME
MERIDIAN
VILLAS & APARTMENTS



ATMOSPHERE
A NEW BEGINNING.

Inspired by the serenity of nature,
atmosphere is a stylish set of family villas,
that redefine modern luxury living.

ATMOSPHERE
LUXURY VILLAS

Call: +91 9847 0000 20 / 9847 0000 30

LIVE THE PRIME LIFE

PRIME
MERIDIAN
VILLAS & APARTMENTS



ATMOSPHERE
LUXURY VILLAS

Call: +91 9847 0000 20 / 9847 0000 30

LIVE THE PRIME LIFE

PRIME
MERIDIAN
VILLAS & APARTMENTS



ATMOSPHERE
LUXURY VILLAS

Call: +91 9847 0000 20 / 9847 0000 30

LIVE THE PRIME LIFE

PRIME
MERIDIAN
VILLAS & APARTMENTS



ATMOSPHERE
LUXURY VILLAS

Call: +91 9847 0000 20 / 9847 0000 30

LIVE THE PRIME LIFE

PRIME
MERIDIAN
VILLAS & APARTMENTS



ATMOSPHERE
LUXURY VILLAS

Call: +91 9847 0000 20 / 9847 0000 30

LIVE THE PRIME LIFE

PRIME
MERIDIAN
VILLAS & APARTMENTS



ATMOSPHERE
LUXURY VILLAS

Call: +91 9847 0000 20 / 9847 0000 30



TYPE - A | Area: 2583 Sq.Ft

TYPE-A

EAST FACING VILLA - GROUND FLOOR

GROUND FLOOR - 1227 Sq.Ft
FIRST FLOOR - 1197 Sq.Ft
TERRACE FLOOR - 159 Sq.Ft

TOTAL AREA: 2583 Sq.Ft



TYPE-A

EAST FACING VILLA - FIRST FLOOR

GROUND FLOOR - 1227 Sq.Ft
FIRST FLOOR - 1197 Sq.Ft
TERRACE FLOOR - 159 Sq.Ft

TOTAL AREA: 2583 Sq.Ft



TYPE-A

EAST FACING VILLA - TERRACE FLOOR

GROUND FLOOR - 1227 Sq.Ft
FIRST FLOOR - 1197 Sq.Ft
TERRACE FLOOR - 159 Sq.Ft

TOTAL AREA: 2583 Sq.Ft





TYPE - B | Area: 2583 Sq.Ft

TYPE-B

WEST FACING VILLA - GROUND FLOOR

GROUND FLOOR - 1227 Sq.Ft
FIRST FLOOR - 1197 Sq.Ft
TERRACE FLOOR - 159 Sq.Ft

TOTAL AREA: 2583 Sq.Ft



TYPE-B

WEST FACING VILLA - FIRST FLOOR

GROUND FLOOR - 1227 Sq.Ft
FIRST FLOOR - 1197 Sq.Ft
TERRACE FLOOR - 159 Sq.Ft

TOTAL AREA: 2583 Sq.Ft

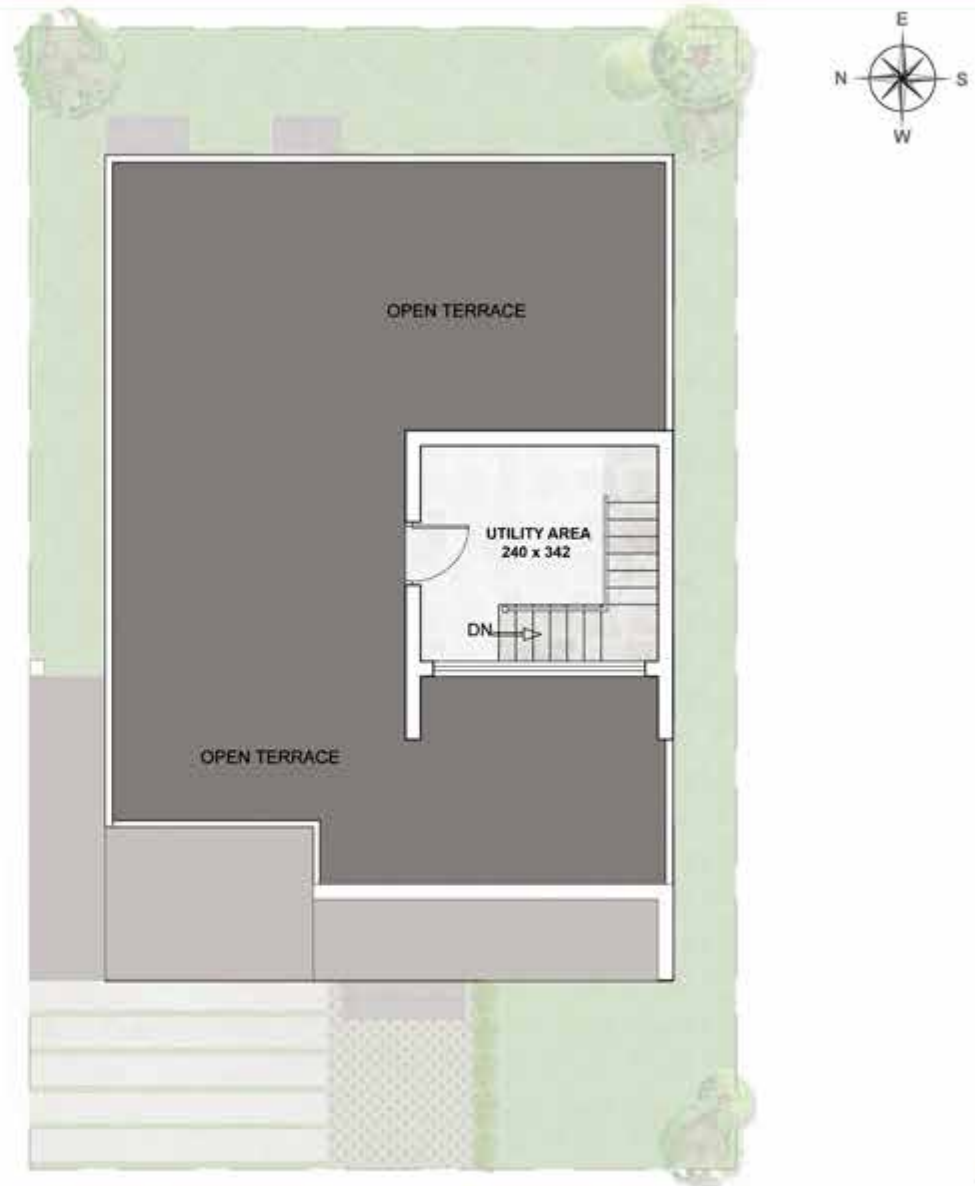


TYPE-B

WEST FACING VILLA - TERRACE FLOOR

GROUND FLOOR - 1227 Sq.Ft
FIRST FLOOR - 1197 Sq.Ft
TERRACE FLOOR - 159 Sq.Ft

TOTAL AREA: 2583 Sq.Ft





TYPE - C | Area: 2361 Sq.Ft

TYPE-C

WEST FACING VILLA - GROUND FLOOR

GROUND FLOOR - 1227 Sq.Ft
FIRST FLOOR - 975 Sq.Ft
TERRACE FLOOR - 159 Sq.Ft

TOTAL AREA: 2361 Sq.Ft



TYPE-C

WEST FACING VILLA - FIRST FLOOR

GROUND FLOOR - 1227 Sq.Ft
FIRST FLOOR - 975 Sq.Ft
TERRACE FLOOR - 159 Sq.Ft

TOTAL AREA: 2361 Sq.Ft



TYPE-C

WEST FACING VILLA - TERRACE FLOOR

GROUND FLOOR - 1227 Sq.Ft
FIRST FLOOR - 975 Sq.Ft
TERRACE FLOOR - 159 Sq.Ft

TOTAL AREA: 2361 Sq.Ft





TYPE - D | Area: 3373 Sq.Ft

TYPE-D

EAST FACING VILLA - GROUND FLOOR

GROUND FLOOR - 1656 Sq.Ft
FIRST FLOOR - 1558 Sq.Ft
TERRACE FLOOR - 159 Sq.Ft

TOTAL AREA: 3373 Sq.Ft





TYPE-D

EAST FACING VILLA - FIRST FLOOR

GROUND FLOOR - 1656 Sq.Ft
FIRST FLOOR - 1558 Sq.Ft
TERRACE FLOOR - 159 Sq.Ft

TOTAL AREA: 3373 Sq.Ft

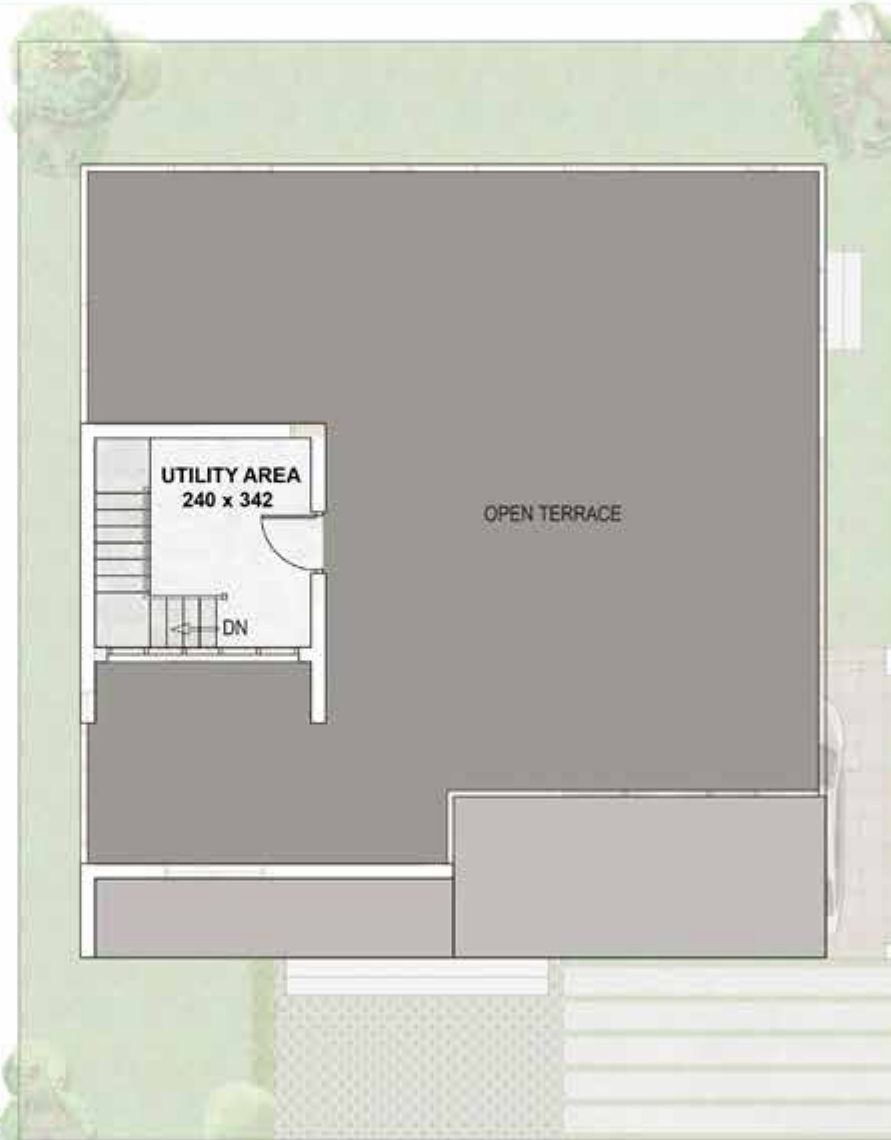


TYPE-D

EAST FACING VILLA - TERRACE FLOOR

GROUND FLOOR - 1656 Sq.Ft
FIRST FLOOR - 1558 Sq.Ft
TERRACE FLOOR - 159 Sq.Ft

TOTAL AREA: 3373 Sq.Ft





TYPE - E | Area: 4136 Sq.Ft

TYPE-E

EAST FACING VILLA - GROUND FLOOR

GROUND FLOOR - 1748 Sq.Ft
FIRST FLOOR - 1695 Sq.Ft
SECOND FLOOR - 693 Sq.Ft

TOTAL AREA: 4136 Sq.Ft



TYPE-E

EAST FACING VILLA - FIRST FLOOR

GROUND FLOOR - 1748 Sq.Ft
FIRST FLOOR - 1695 Sq.Ft
SECOND FLOOR - 693 Sq.Ft

TOTAL AREA: 4136 Sq.Ft



TYPE-E

EAST FACING VILLA - SECOND FLOOR

GROUND FLOOR - 1748 Sq.Ft
FIRST FLOOR - 1695 Sq.Ft
SECOND FLOOR - 693 Sq.Ft

TOTAL AREA: 4136 Sq.Ft



TYPE-F

WEST FACING VILLA - GROUND FLOOR

GROUND FLOOR - 1185.97 Sq.Ft
FIRST FLOOR - 1161.33 Sq.Ft
TERRACE FLOOR - 159.03 Sq.Ft

TOTAL AREA: 2506.33 Sq.Ft



TYPE-F

WEST FACING VILLA - FIRST FLOOR

GROUND FLOOR - 1185.97 Sq.Ft
FIRST FLOOR - 1161.33 Sq.Ft
TERRACE FLOOR - 159.03 Sq.Ft

TOTAL AREA: 2506.33 Sq.Ft

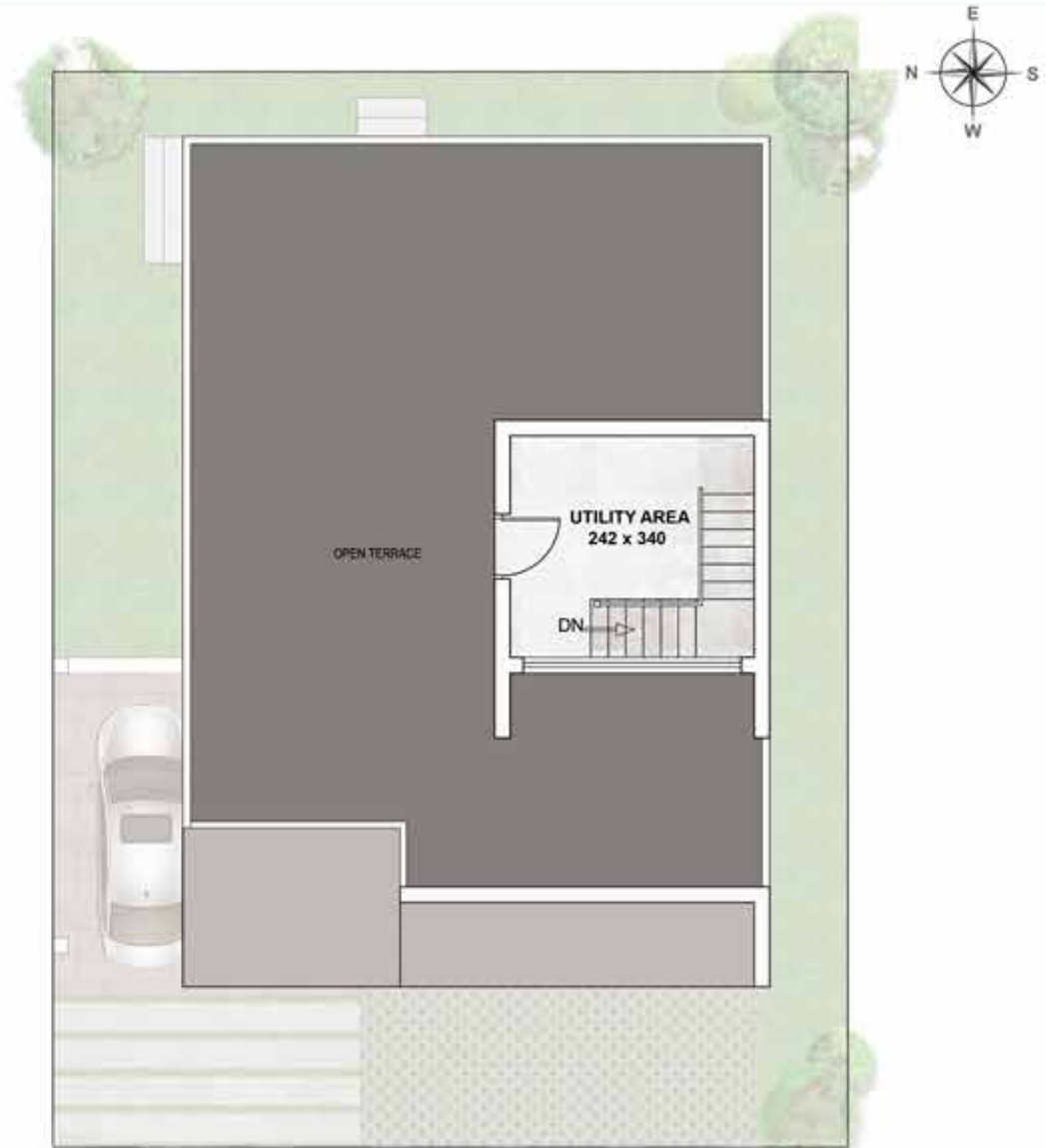


TYPE-F

WEST FACING VILLA - TERRACE FLOOR

GROUND FLOOR - 1185.97 Sq.Ft
FIRST FLOOR - 1161.33 Sq.Ft
TERRACE FLOOR - 159.03 Sq.Ft

TOTAL AREA: 2506.33 Sq.Ft





SITE LAYOUT

SPECIFICATIONS

STRUCTURE

Ground + 2 storied RCC structure.

FLOORING

Premium 100cm x 100cm vitrified tiles in living and dining area. Premium 80cm x 80cm vitrified tiles for all bedrooms. Anti-skid ceramic tiles for kitchen, sit out and balconies. Vitrified tiles for the remaining areas.

KITCHEN

Kitchen counter with granite top and single bowl with drain board sink. Single bowl sink with tap in work area. Dado tiles to a height of 60 cms. Hot and cold mixer tap in kitchen.



TOILET

- Premium quality tiles on floor and for full height up to ceiling on the walls.
- Concealed piping with premium quality CP fittings (Kohler/Equivalent).
- Wall hung closets with concealed cistern (Kohler/Equivalent) in all toilets.
- False ceiling with grid panels.
- Hot and cold mixer taps with shower in all toilets.
- Ordinary EWC & cold water in domestic help toilet.

SPECIFICATIONS

DOORS & WINDOWS

- Designer entrance door and door frame in hardwood.
- Elegant molded paneled door shutters with frame for bedrooms, kitchen and water resistant doors for toilets.
- UPVC French window for dining area. UPVC windows and ventilators.

PAINTING

Two coat putty and plastic emulsion paint for internal walls. Putty and plastic emulsion for ceiling. Premium exterior weather coat emulsion for external walls.

SPECIAL FINISH

Special texture/cladding for the front exterior in designated areas.

ELECTRICAL

- Concealed conduit wiring with copper conductor, adequate light and fan points, 6/16 AMPS socket points controlled etc by ELCB and MCBs with independent KSEB meter.
- Split A/c provision in all bedrooms, living and dining room. Provision for Inverter.

TELEPHONE

Telephone point in living room, family living and master bedroom.

WATER SUPPLY

KWA water connection and ground water supply through sump and overhead tank.

TV POINT

TV point in family living and master bedroom.

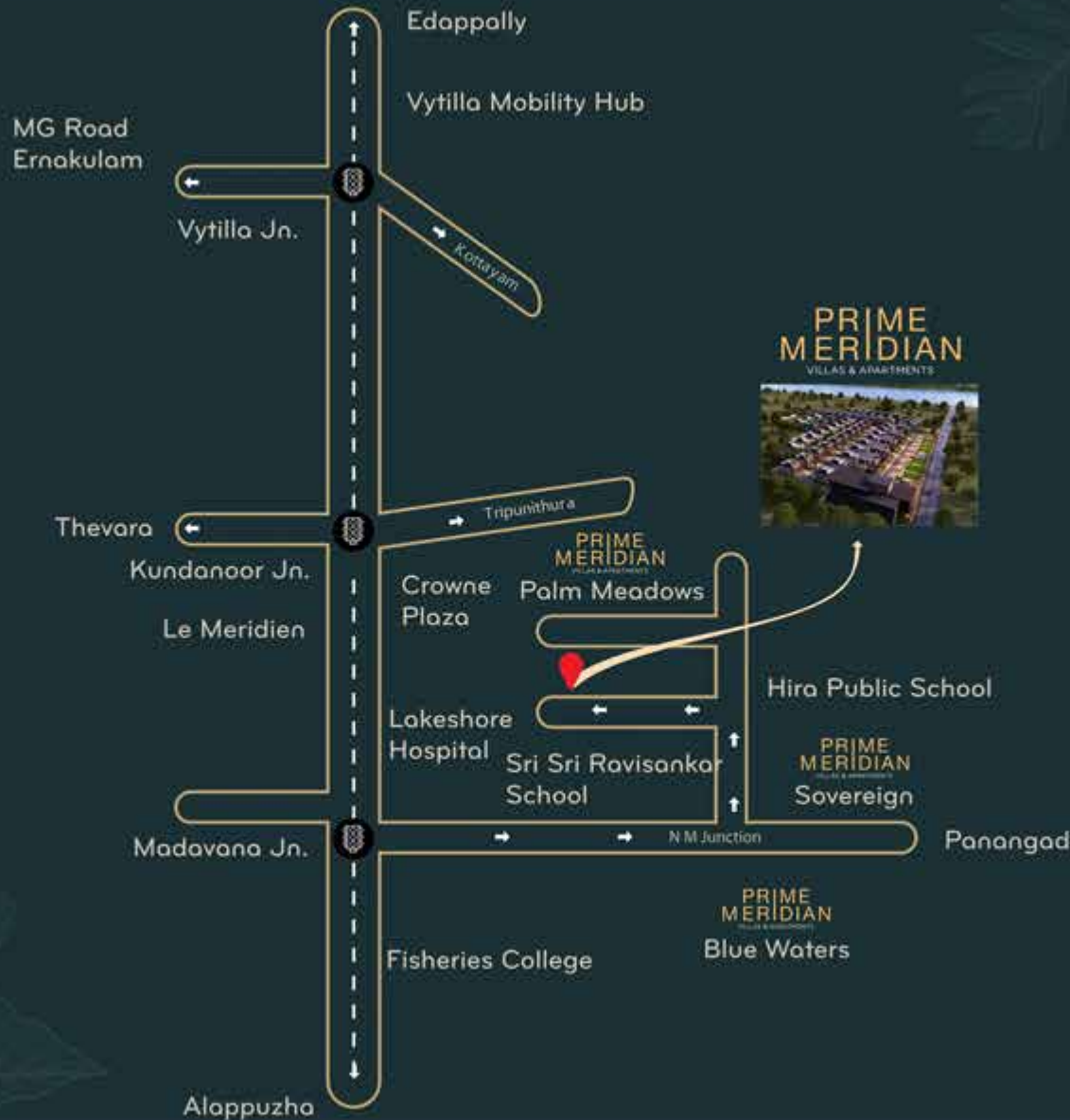
AMENITIES

- 65 Super luxury Villas
- Exquisite landscaped garden with club house and recreation area
- Swimming pool with covered kids pool
- Air conditioned Recreation hall
- Fully equipped gym
- Multi games room for snooker, cards, chess and caroms
- Sauna and Steam Bath
- Indoor badminton court
- Exclusive Children's play area
- Landscaped garden area for outdoor recreation and party area



- Two side by side car parking for each villa
- 3 & 4 BHK with Utility space for every villa
- Options to customize the second floor of Villa at additional cost
- Rain water harvesting
- Proficient Waste management system with Organic waste converter
- 24x7 CCTV surveillance systems in common areas and manned automatic gates.
- Generator back up for all common area
- Provision for broadband in every villa

LOCATION



CONTACT US

S.L.Avenue, NH Bye Pass
Maradu P.O, Kundanoor
Ernakulam - 682 304, Kerala.

PRIME
MERIDIAN
VILLAS & APARTMENTS

Tel: +91 484 2705890
E mail: sales@primemeridian.in
Web: www.primemeridian.in

Call: +91 9847 0000 20 / 9847 0000 30

CREDAI
KOCHI

Call: +91 9847 0000 20 / 9847 0000 30

ATMOSPHERE
LUXURY VILLAS