




NANMA
By Meeran

K-RERA/PRJ/ERN/070/2022



Discover the Goodness of Luxury Lifestyle

 **ONE COCHIN**. Silver Sand Island. Vyttila.



ONE COCHIN

DEFINING LUXURIOUS LIFESTYLE

Namma Properties, from the house of Group Meeran brings you **ONE COCHIN** - luxury condominiums in the heart of Cochin.

ONE COCHIN Situated in the serene Silver Sand Island, in close proximity to the bustling Vyttila Junction, defines the best of luxury living in Cochin. Coming up in 4.78 acres, **ONE COCHIN** is a multiple tower super luxury condominium, consisting tastefully space -crafted 1 BHK and 2 BHK apartments.

Designed to set new standards in luxury and high life, you can expect everything premium, in amenities and facilities here. Envisaged by Namma Properties, a subsidiary of Group Meeran, you can expect everything best and finest at **ONE COCHIN**



2 BHK Artistic 3D View



ONE COCHIN is coming up in the heart of Cochin's Commercial District. Walking distance from Vyttila junction, and steps away from Thykoodam metro station, it is well connected to premier schools, the best hospitals, and Cochin's own Lulu Mall.

Towering over the Kaniyampuzha river, the units of One Cochin offer panoramic views of Cochin's myriad water bodies and its bustling neighbourhoods.

ONE COCHIN is designed with a modern aesthetic and sustainable practices, allowing it to seamlessly blend into the austere surroundings of Silver Sand Island - so you can enjoy the urban life, in an oasis of tranquility.



Tropical Landscaped Walking Track



Tennis Court



Lotus Pond

Badminton Courts



Swimming Pool - 25 mtrs length



The Grand Entrance

ONE COCHIN comes with a host of state-of-the-art amenities. Stay healthy with on-premise facilities for tennis, badminton, basketball and a full length swimming pool. There is also a completely netted regulation size cricket pitch. You can enjoy a lazy evening with friends at our Pavilion with indoor games and party area. Or go for an evening stroll with the background sounds of children playing along Kaniyampuzha within the rustic walkways designed by our award winning architects.

Health Club



Pavilion - The Lobby



Soft & Hard Landscaped Garden



EV Charging Points - 3 Nos

SPECIFICATIONS

Foundation	: RCC Structure on deep pile foundations
Structure	: RCC framed structure
Car Parking	: Covered Parking
Bed Room	: 1200 x 600 Designer Tiles
Paint	: Berger Bison Total Care or Equivalent
Kitchen	: Kitchen shall be bare Kitchen (without any RCC Slab/Steel Structure, Counter Top, Steel Sink & Faucet) • Inlet Points for Sink cock & Water Purifier • Provisions for Washing Machine & Dish Washer
Toilets	: 1200 x 600 Designer Tiles
Door	: Pre - Hung Doors from Jacson or equivalent. Iron Mongery Yale or equivalent
Electrical Specification	: Switches - Honeywell or equivalent • DB & ELCB - L&T or equivalent • Wiring - V Guard or equivalent • AC Points in all Bedrooms • Telephone and TV points in Living Room • No electrical fixtures assumed
Sanitary Fixtures	: Sanitary Fixtures - Kohler, Jaguar or equivalent & provisions for geysers in all Toilets)



Type A
2 BHK Apartment
Super Built up Area : 850 Sq. Ft.
Plinth Area : 697 Sq. Ft.
RERA Carpet : 587 Sq. Ft.



Type B
1 BHK Apartment
Super Built up Area : 552 Sq. Ft.
Plinth Area : 453 Sq. Ft.
RERA Carpet Area : 363 Sq. Ft.

Tower 01



Tower 02



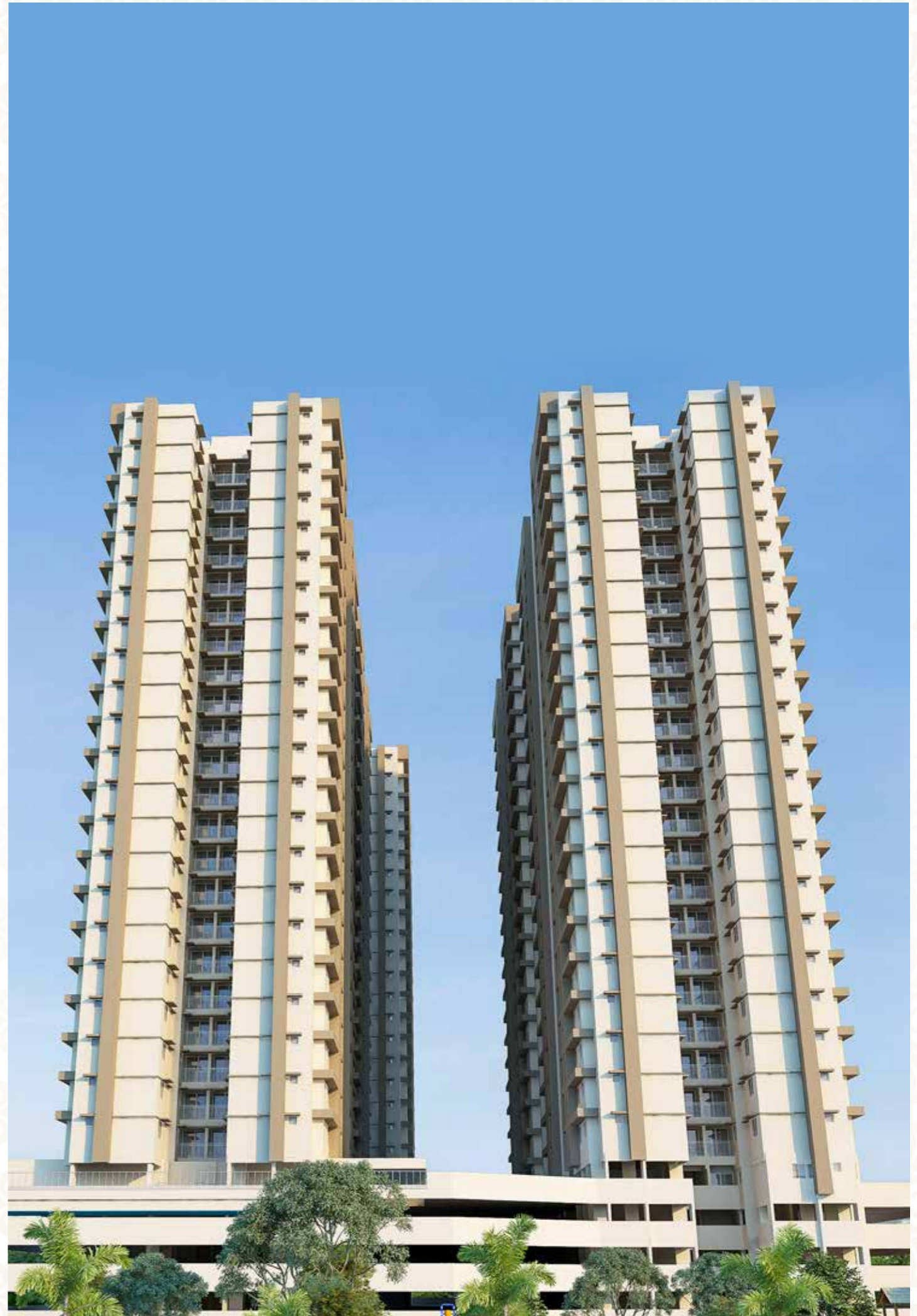
Tower 03



Tower 04



Tower 05





MASTER PLAN



AMENITIES:

The Pavilion Consisting of

- Indoor Games
- Health Club
- Swimming Pool
- Recreation Hall
- Furnished Lobby

Outdoor

- Badminton Court
- Tennis Court
- Basketball Court
- Cricket Pitch
- Landscape Area
- Childrens Play Area
- Jogging Track

PROXIMITIES

TRANSPORTATION HUBS

Thykooodam Metro Station	:	Walkable Distance- 400 meters
Vyttila Hub	:	1.4 km

HOTELS

Holiday Inn	:	4.3 km
Le-Meridian	:	4.6 km
Crowne Plaza	:	4.1 km
Marriott	:	8.2 km

SCHOOLS

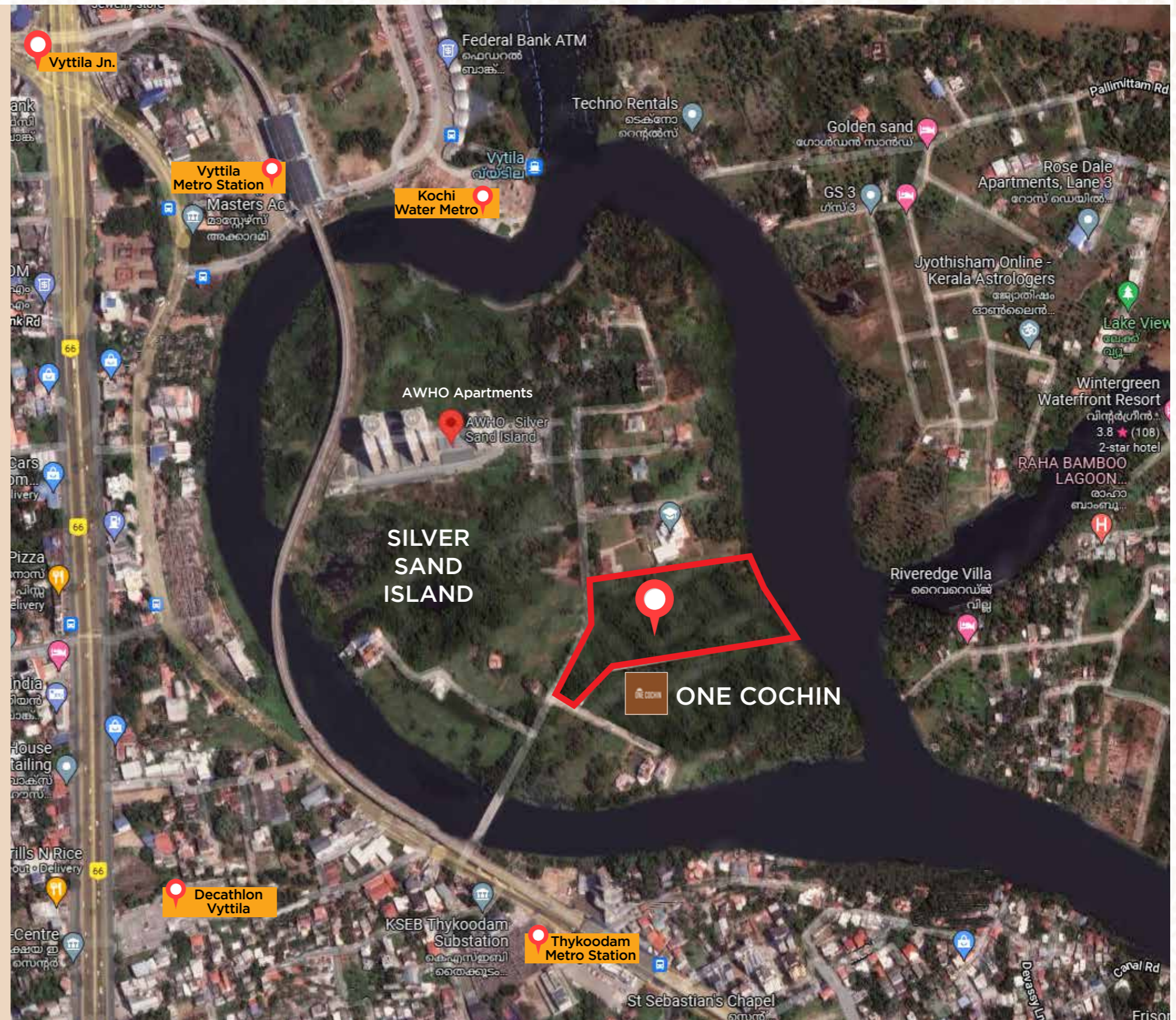
Toch-H School	:	2.7 km
The Choice School	:	4.8 km
The Gregorian School	:	4.1 km
Al-Ameen School	:	8.2 km

MALLS

Lulu	:	8.2 Km
Prestige Capital	:	5.0 km
Abad Nucleus	:	3.4 km

HOSPITALS

Medical Trust	:	4.9 km
Lakeshore Hospital	:	6.4 km
Ernakulam Medical Centre	:	5.4 km





NANMA PROPERTIES LTD.

2B, 34/137D, Eastern HQ Tower,
NH Bypass, Edapally, Ernakulam - 682024,
Office : +91 484 716 1176. Mobile : +91 9747 84 0000
Email : customerdelight@nanmaconstruct.com

ONE COCHIN